

Support for Singaporeans 1- and 2-room HDB Flats

Apr 2025 – Mar 2026



Benefits for You

- **SG60 Vouchers**
 - for all Singaporeans aged 21 to 59 \$600
 - for all Singaporeans aged 60 and above \$800
- **Cash** for all Singaporeans aged 21 and above \$100 to \$1,450
- **MediSave**
 - for Singaporeans aged 65 and above \$250 to \$450
 - Additional MediSave Bonus for Singaporeans born in 1950 to 1973 with lower MediSave balances \$500
- **Child LifeSG Credits or Edusave Account / Post-Secondary Education Account (PSEA) Top-up**
 - Child LifeSG Credits for all Singaporean children aged 12 and below \$500
 - Edusave Account / PSEA top-up for all Singaporean children aged 13 to 20 \$500
- **SG60 ActiveSG Credit Top-Up** for all ActiveSG members \$100
- **SG Culture Pass** for all Singaporeans aged 18 and above \$100
- **Personal Income Tax Rebate**
 - for all tax residents, 60% of tax payable for Year of Assessment 2025 Up to \$200

Benefits for Households

- **CDC Vouchers** for all Singaporean households \$800
- **U-Save** for HDB households \$760
- **S&CC Rebate** for HDB households About \$100
(3.5 months of offset)
- **Climate Vouchers** for all HDB households \$400
(including \$100 top-up)

Note: Benefits are subject to the individual's or household's eligibility.

Upcoming Benefits
Support For You



go.gov.sg/supportforyoub2025

Benefits Received
Your Benefits @ LifeSG



go.gov.sg/yourbenefitsb2025

gov
.sg



BUDGET
2025

Support for Singaporeans

3-room HDB Flats

Apr 2025 – Mar 2026



Benefits for You

- **SG60 Vouchers**
 - for all Singaporeans aged 21 to 59 \$600
 - for all Singaporeans aged 60 and above \$800
- **Cash** for all Singaporeans aged 21 and above \$100 to \$1,450
- **MediSave**
 - for Singaporeans aged 65 and above \$250 to \$450
 - Additional MediSave Bonus for Singaporeans born in 1950 to 1973 with lower MediSave balances \$500
- **Child LifeSG Credits or Edusave Account / Post-Secondary Education Account (PSEA) Top-up**
 - Child LifeSG Credits for all Singaporean children aged 12 and below \$500
 - Edusave Account / PSEA top-up for all Singaporean children aged 13 to 20 \$500
- **SG60 ActiveSG Credit Top-Up** for all ActiveSG members \$100
- **SG Culture Pass** for all Singaporeans aged 18 and above \$100
- **Personal Income Tax Rebate**
 - for all tax residents, 60% of tax payable for Year of Assessment 2025 Up to \$200

Benefits for Households

- **CDC Vouchers** for all Singaporean households \$800
- **U-Save** for HDB households \$680
- **S&CC Rebate** for HDB households About \$130
(2.5 months of offset)
- **Climate Vouchers** for all HDB households \$400
(including \$100 top-up)

Note: Benefits are subject to the individual's or household's eligibility.

Upcoming Benefits
Support For You



go.gov.sg/supportforyoub2025

Benefits Received
Your Benefits @ LifeSG



go.gov.sg/yourbenefitsb2025

gov
.sg



BUDGET
2025

Support for Singaporeans

4-room HDB Flats

Apr 2025 – Mar 2026



Benefits for You

- **SG60 Vouchers**
 - for all Singaporeans aged 21 to 59 \$600
 - for all Singaporeans aged 60 and above \$800
- **Cash** for all Singaporeans aged 21 and above \$100 to \$1,450
- **MediSave**
 - for Singaporeans aged 65 and above \$250 to \$450
 - Additional MediSave Bonus for Singaporeans born in 1950 to 1973 with lower MediSave balances \$500
- **Child LifeSG Credits or Edusave Account / Post-Secondary Education Account (PSEA) Top-up**
 - Child LifeSG Credits for all Singaporean children aged 12 and below \$500
 - Edusave Account / PSEA top-up for all Singaporean children aged 13 to 20 \$500
- **SG60 ActiveSG Credit Top-Up** for all ActiveSG members \$100
- **SG Culture Pass** for all Singaporeans aged 18 and above \$100
- **Personal Income Tax Rebate**
 - for all tax residents, 60% of tax payable for Year of Assessment 2025 Up to \$200

Benefits for Households

- **CDC Vouchers** for all Singaporean households \$800
- **U-Save** for HDB households \$600
- **S&CC Rebate** for HDB households About \$180
(2.5 months of offset)
- **Climate Vouchers** for all HDB households \$400
(including \$100 top-up)

Note: Benefits are subject to the individual's or household's eligibility.

Upcoming Benefits
Support For You



go.gov.sg/supportforyoub2025

Benefits Received
Your Benefits @ LifeSG



go.gov.sg/yourbenefitsb2025

gov
.sg



BUDGET
2025

Support for Singaporeans

5-room HDB Flats

Apr 2025 – Mar 2026



Benefits for You

- **SG60 Vouchers**
 - for all Singaporeans aged 21 to 59 \$600
 - for all Singaporeans aged 60 and above \$800
- **Cash** for all Singaporeans aged 21 and above \$100 to \$1,450
- **MediSave**
 - for Singaporeans aged 65 and above \$250 to \$450
 - Additional MediSave Bonus for Singaporeans born in 1950 to 1973 with lower MediSave balances \$500
- **Child LifeSG Credits or Edusave Account / Post-Secondary Education Account (PSEA) Top-up**
 - Child LifeSG Credits for all Singaporean children aged 12 and below \$500
 - Edusave Account / PSEA top-up for all Singaporean children aged 13 to 20 \$500
- **SG60 ActiveSG Credit Top-Up** for all ActiveSG members \$100
- **SG Culture Pass** for all Singaporeans aged 18 and above \$100
- **Personal Income Tax Rebate**
 - for all tax residents, 60% of tax payable for Year of Assessment 2025 Up to \$200

Benefits for Households

- **CDC Vouchers** for all Singaporean households \$800
- **U-Save** for HDB households \$520
- **S&CC Rebate** for HDB households About \$180
(2 months of offset)
- **Climate Vouchers** for all HDB households \$400
(including \$100 top-up)

Note: Benefits are subject to the individual's or household's eligibility.

Upcoming Benefits
Support For You



go.gov.sg/supportforyoub2025

Benefits Received
Your Benefits @ LifeSG



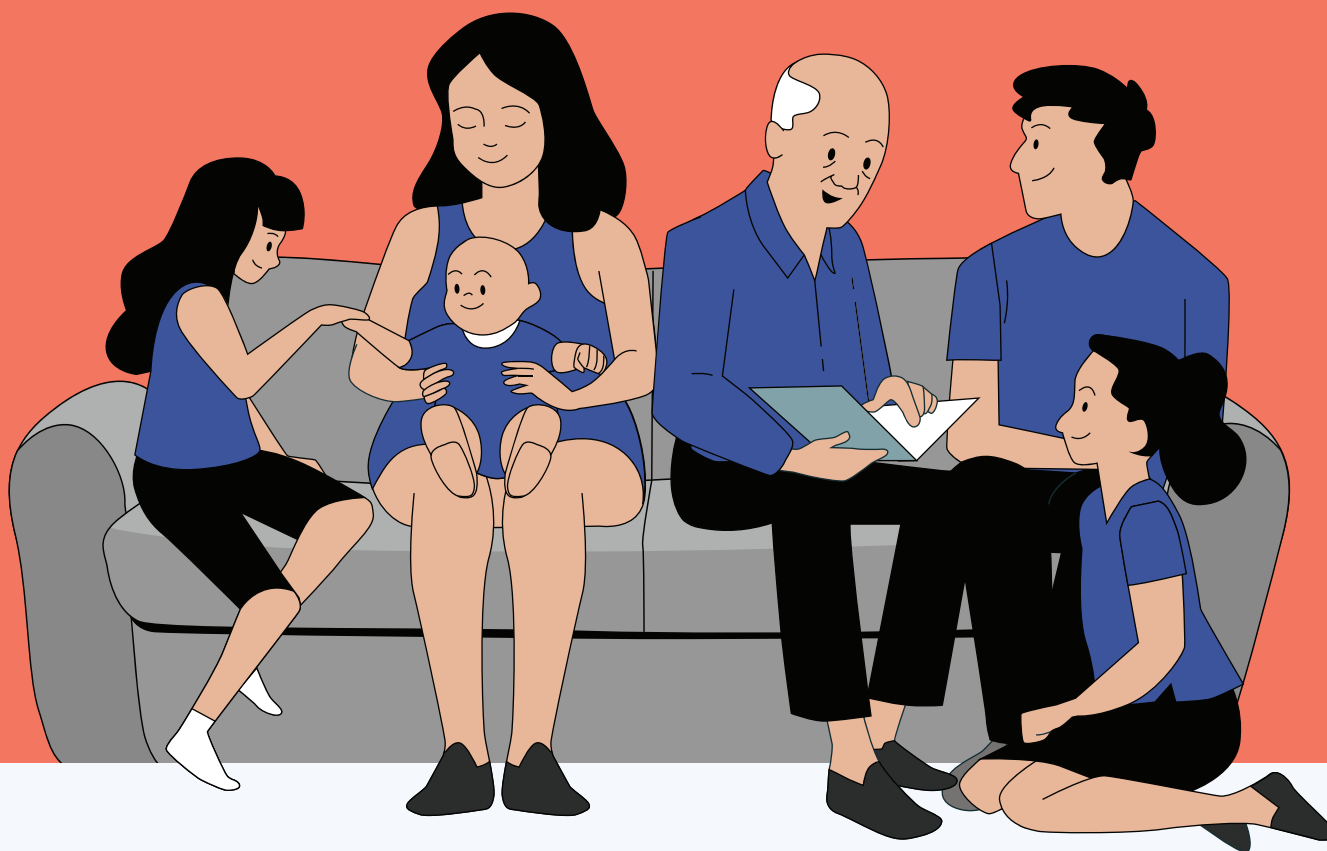
go.gov.sg/yourbenefitsb2025

gov
.sg

BUDGET
2025

Support for Singaporeans Executive / Multi-Generation HDB Flats

Apr 2025 - Mar 2026



Benefits for You

- **SG60 Vouchers**
 - for all Singaporeans aged 21 to 59 \$600
 - for all Singaporeans aged 60 and above \$800
- **Cash** for all Singaporeans aged 21 and above \$100 to \$1,450
- **MediSave**
 - for Singaporeans aged 65 and above \$250 to \$450
 - Additional MediSave Bonus for Singaporeans born in 1950 to 1973 with lower MediSave balances \$500
- **Child LifeSG Credits or Edusave Account / Post-Secondary Education Account (PSEA) Top-up**
 - Child LifeSG Credits for all Singaporean children aged 12 and below \$500
 - Edusave Account / PSEA top-up for all Singaporean children aged 13 to 20 \$500
- **SG60 ActiveSG Credit Top-Up** for all ActiveSG members \$100
- **SG Culture Pass** for all Singaporeans aged 18 and above \$100
- **Personal Income Tax Rebate**
 - for all tax residents, 60% of tax payable for Year of Assessment 2025 Up to \$200

Benefits for Households

- **CDC Vouchers** for all Singaporean households \$800
- **U-Save** for HDB households \$440
- **S&CC Rebate** for HDB households About \$170
(1.5 months of offset)
- **Climate Vouchers** for all HDB households \$400
(including \$100 top-up)

Note: Benefits are subject to the individual's or household's eligibility.

Upcoming Benefits
Support For You



go.gov.sg/supportforyoub2025

Benefits Received
Your Benefits @ LifeSG



go.gov.sg/yourbenefitsb2025

gov
.sg



BUDGET
2025