

# Support for Workers

A fresh Polytechnic graduate could receive up to **\$17,240** in government support

## Fresh Graduate

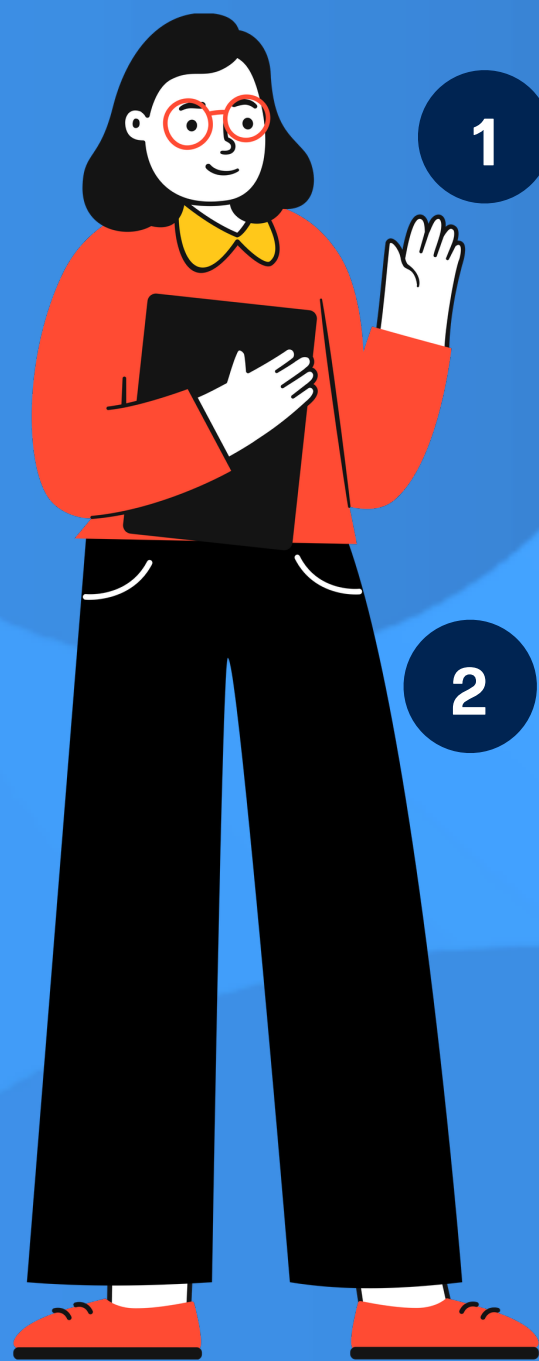


- 20 years old
- Graduated from a Polytechnic in May 2020



6 months after graduation

Next 12 months



1

Attends a free Continuing Education and Training course at Polytechnic or ITE

Training allowances and course fees comprise:

Govt Support: **\$1,400**

2

Subsequently attends SGUnited Traineeship for 6 months and receives up to **\$10,800** in training allowance

Govt Support: **\$8,640**

Employer pays: **\$2,160**

3

Lands a job that pays \$2,400 per month with a Jobs Growth Incentive (JGI)-eligible firm

Annual wages comprise:

Govt Support: **\$7,200**

Employer pays: **\$21,600**

# Support for Workers

A mature jobseeker could receive up to **\$75,200** in government support

## Mature Jobseeker



- 45 years old
- Last drawn monthly salary of \$6,000
- Retrenched in 2020



While searching for a job

Next 18 months

Training allowances and course fees comprise:

Annual wages comprise:

1

Attends SGUnited Skills programme and receives **\$7,200** in training allowance

Uses SkillsFuture Credit to pay for course fees, which are already subsidised

Govt Support: **\$21,200**

2

Successfully placed into a job that pays \$6,000 with a Jobs Growth Incentive (JGI)-eligible employer

Govt Support: **\$54,000**

Employer pays: **\$54,000**



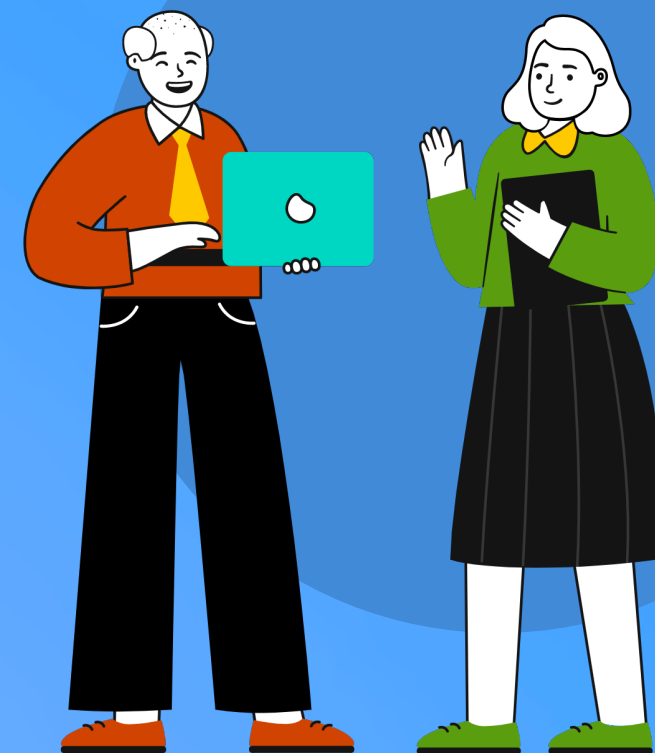
# Support for Workers

An employed senior worker could receive up to **\$13,440** in government support

## Employed Senior Worker



- 62 years old
- Last drawn monthly salary of \$3,000
- Working in a Jobs Support Scheme Tier 1 Firm



Employee receives \$3,000/month in wages for 12 months

Employee goes for training

1

**\$8,100** in wage support under Job Support Scheme

**\$2,500** per senior worker aged 60 and above under Senior Worker Early Adopter Grant

**\$540** in wage support under Wage Credit Scheme

**\$1,080** in wage support under Senior Employment Credit

Annual wages comprise:

Govt Support: **\$12,220**

Employer pays: **\$23,780**

2

Employee receives full-time training through the Enhanced Training Support Programme

Course fees comprise:

Govt Support: **\$1,220**

Employer pays: **\$105**