

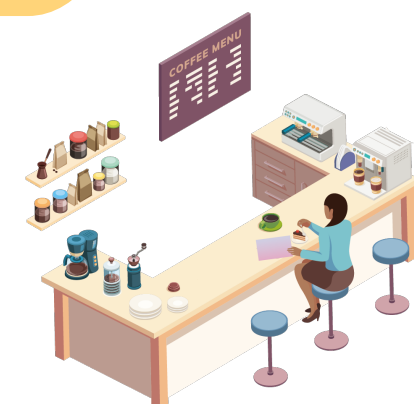
# For Workers and Businesses

Updated  
18 Jun '21

Helping affected workers and businesses from May to Jul '21

## Additional Support for F&B, Sports, and Performing Arts

- **[New] 50%** Jobs Support Scheme (JSS) support extended by three weeks starting from 21 Jun '21.
- **[New] 10%** JSS Support to continue two weeks after starting from 12 Jul '21.



## Additional Support\* for Retail\*\* and Family Attractions

- **[New] 30%** JSS Support extended by three weeks starting from 21 Jun '21.
- **[New] 10%** JSS Support to continue two weeks after starting from 12 Jul '21.



\*JSS support for affected personal care services will be at 30% from 16 May to 20 Jun '21; and 10% from 21 to 30 Jun '21, as per 10 Jun '21 announcement.

\*\*Supermarkets, convenience stores, and online retailers are not eligible.

## Rental Support for SME and NPO Tenant- Occupiers of Commercial Properties

- **[Ongoing] Half month** of rental relief cash payout disbursed by IRAS to qualifying tenants.
- **[Ongoing] One month** of rental relief for qualifying tenants on government-owned commercial premises.

