

# What Assistance do Lower-income Families Receive from the Government?

We will continue to provide support to those in need. With many different schemes available, the lower-income can receive extra help and have greater assurance and peace of mind.



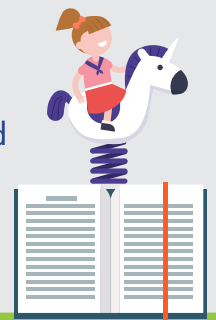
## Healthcare

- MediShield Life premium subsidies
- Medifund
- Polyclinics, Specialist Outpatient Clinic (SOC) subsidies
- Intermediate and Long-Term Care (ILTC) subsidies
- Community Health Assist Scheme (CHAS) Blue
- Hospitalisation subsidies



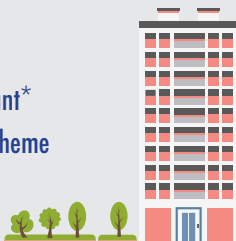
## Raising and caring for children

- Baby Bonus Cash Gift
- Child Development Account – First Step Grant & Government matching contributions
- Medisave Grant for Newborns
- Parental leave schemes
- Pre-School subsidies
- Edusave contributions\*
- Financial Assistance in schools and Institutes of Higher Learning\*
- Bursaries in schools and Institutions of Higher Learning\*
- Subsidised education at all levels



## Housing

- Faster access to housing for young couples (e.g. BTO flats with shorter waiting time, introduction of Re-Offer of Balance Flats, Priority Schemes)
- CPF Housing Grants
- Proximity Housing Grant\*
- Fresh Start Housing Scheme
- Public Rental Housing



## Other support

- SG Bonus\*
- GST Voucher – Cash
- GST Voucher – U-Save\*
- S&CC Rebate\*
- Workfare Income Supplement (WIS)
- Workfare Training Support (WTS)
- Workfare Transport Concession Scheme (WTCS)
- ComCare Assistance



## For Seniors

- Community Networks for Seniors\*
- Action Plan for Successful Ageing
- Medisave Top-Ups (e.g. GSTV – Medisave)
- Pioneer Generation Package
- Enhancement for Active Seniors (EASE)
- Seniors' Mobility and Enabling Fund (SMF)\*
- Silver Support Scheme



# What Assistance do Middle-income Families Receive from the Government?

We will continue to provide support to families to better prepare for the future. With different schemes available, the middle-income can continue to receive support in various areas.



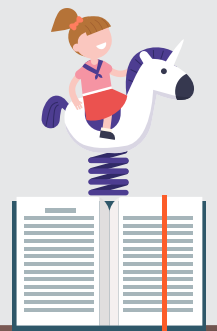
## Healthcare

- MediShield Life premium subsidies
- Polyclinics, Specialist Outpatient Clinic (SOC) subsidies
- Intermediate and Long-Term Care (ILTC) subsidies
- Community Health Assist Scheme (CHAS) Orange
- Hospitalisation subsidies



## Raising and caring for children

- Baby Bonus Cash Gift
- Child Development Account – First Step Grant & Government matching contributions
- Medisave Grant for Newborns
- Parental leave schemes
- Tax benefits
- Pre-School subsidies
- Edusave contributions\*
- Financial Assistance in schools and Institutes of Higher Learning\*
- Bursaries in schools and Institutions of Higher Learning\*
- Subsidised education at all levels



## Housing

- Faster access to housing for young couples (e.g. BTO flats with shorter waiting time, introduction of Re-Offer of Balance Flats, Priority Schemes)
- CPF Housing Grants
- Proximity Housing Grant\*



## Other support

- SG Bonus\*
- GST Voucher – U-Save\*
- S&CC Rebate\*
- Foreign Domestic Worker Levy Concession



## For Seniors

- Community Networks for Seniors\*
- Action Plan for Successful Ageing
- Enhancement for Active Seniors (EASE)
- Seniors' Mobility and Enabling Fund (SME)\*
- Medisave Top-Ups (e.g. GSTV – Medisave)
- Pioneer Generation Package

