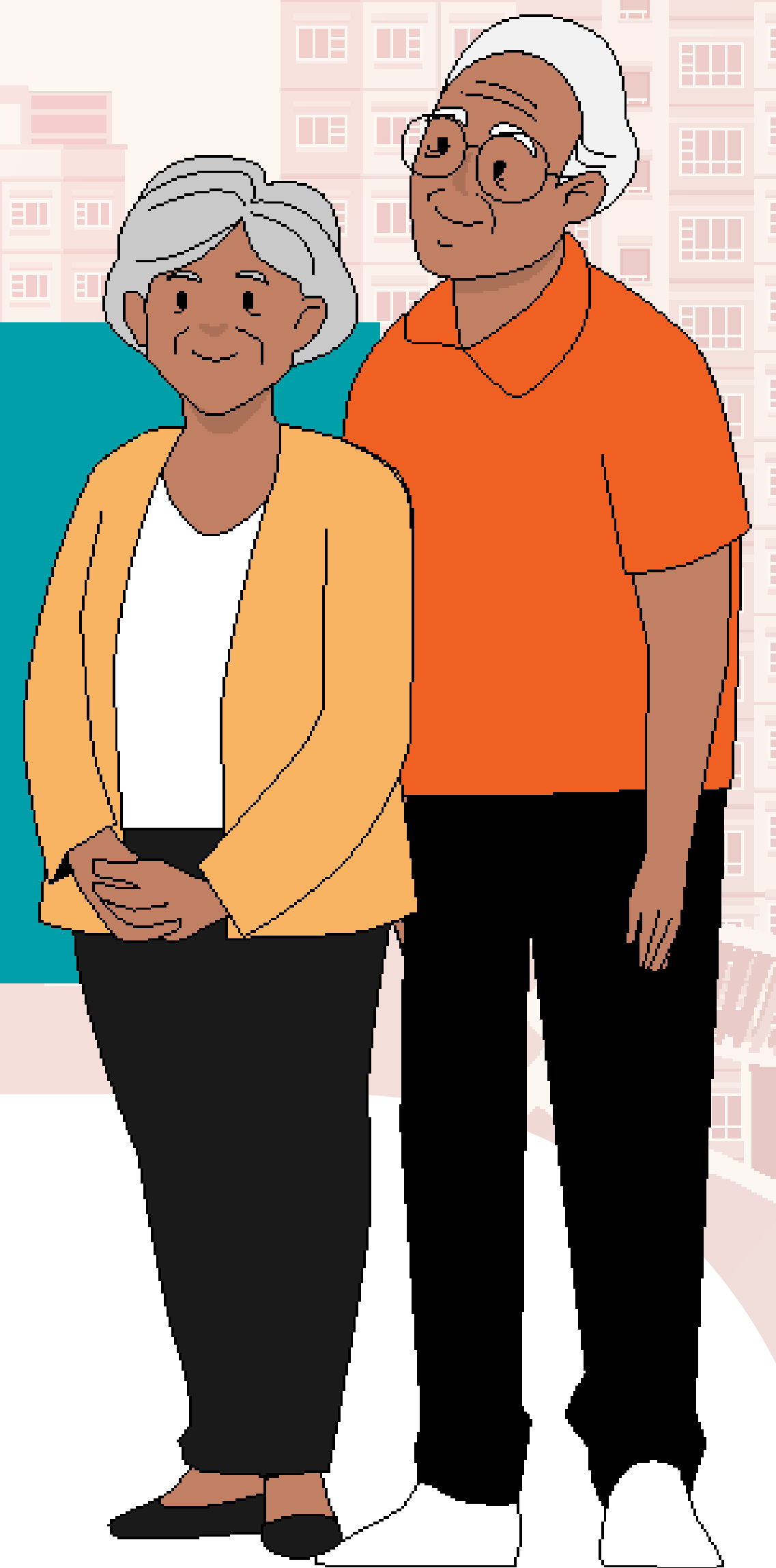


# Retired Elderly Couple

## 3-Room HDB with no income

- Husband (70-year-old, Retired)
- Wife (66-year-old, Retired)



## Total Support of about **\$7,200**

(Apr 2023 – Mar 2024)

• Cash [GSTV, AP]

\$3,800

• Seniors' Bonus [AP]

\$1,200

• MediSave Top-ups [GSTV, AP]

\$800

• U-Save Rebates [GSTV, AP]

\$700

• S&CC Rebates [GSTV, AP]

~\$168\*

• CDC Vouchers [AP]

\$500

• Public Transport Vouchers

\$50

\*This is equivalent to approximately 3 months of S&CC Rebates



# Middle-Income Couple with Two Young Children

4-Room HDB, Monthly Household Income: \$8,000

- Husband (37-year-old, \$3,500 monthly income)
- Wife (34-year-old, \$4,500 monthly income)
- Daughter (6-year-old)
- Son (4-year-old)



**Total Support of about \$3,800**

(Apr 2023 – Mar 2024)

• Cash [AP]

\$1,400

• MediSave Top-ups [AP]

\$300

• Child Development Account Top-Ups [AP]

\$800

• U-Save Rebates [GSTV, AP]

\$620

• S&CC Rebates [GSTV, AP]

~\$225\*

• CDC Vouchers [AP]

\$500

\*This is equivalent to approximately 3 months of S&CC Rebates



# 3-Generation Family

5-Room HDB, Monthly Household Income: \$12,600

- Grandfather (70-year-old, Retired)
- Grandmother (68-year-old, Retired)
- Husband (40-year-old, \$6,500 monthly income)
- Wife (38-year-old, \$6,100 monthly income)
- Son (10-year-old)
- Daughter (8-year-old)



## Total Support of about **\$9,400**

(Apr 2023 – Mar 2024)

- Cash [GSTV, AP] **\$5,200**
- Seniors' Bonus [AP] **\$1,200**
- MediSave Top-ups [GSTV, AP] **\$1,100**
- Edusave Account Top-Ups [AP] **\$600**
- U-Save Rebates [GSTV, AP] **\$540**
- S&CC Rebates [GSTV, AP] **~\$211\***
- CDC Vouchers [AP] **\$500**

\*This is equivalent to approximately 2.5 months of S&CC Rebates

