

RISING COSTS: HOW THE GOVERNMENT IS HELPING YOU

We are all concerned about the rising cost of living. Food and oil prices are going up all over the world and this is affecting Singapore too.

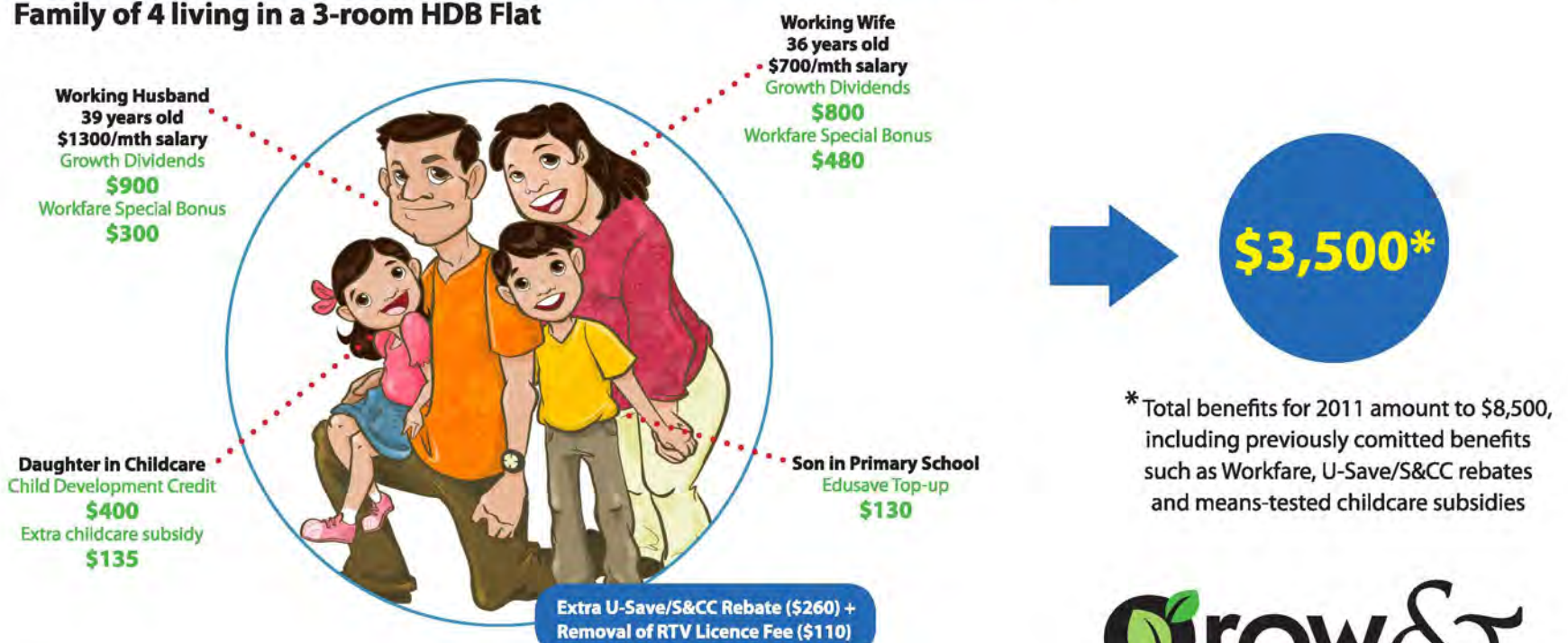
We expect up to 4% inflation for the whole of this year, but higher in the first six months.

Two major domestic factors are higher rentals of homes and more expensive Certificates of Entitlement (COEs) for cars. If you own your house, and are not buying a new car, you should be less affected by inflation.

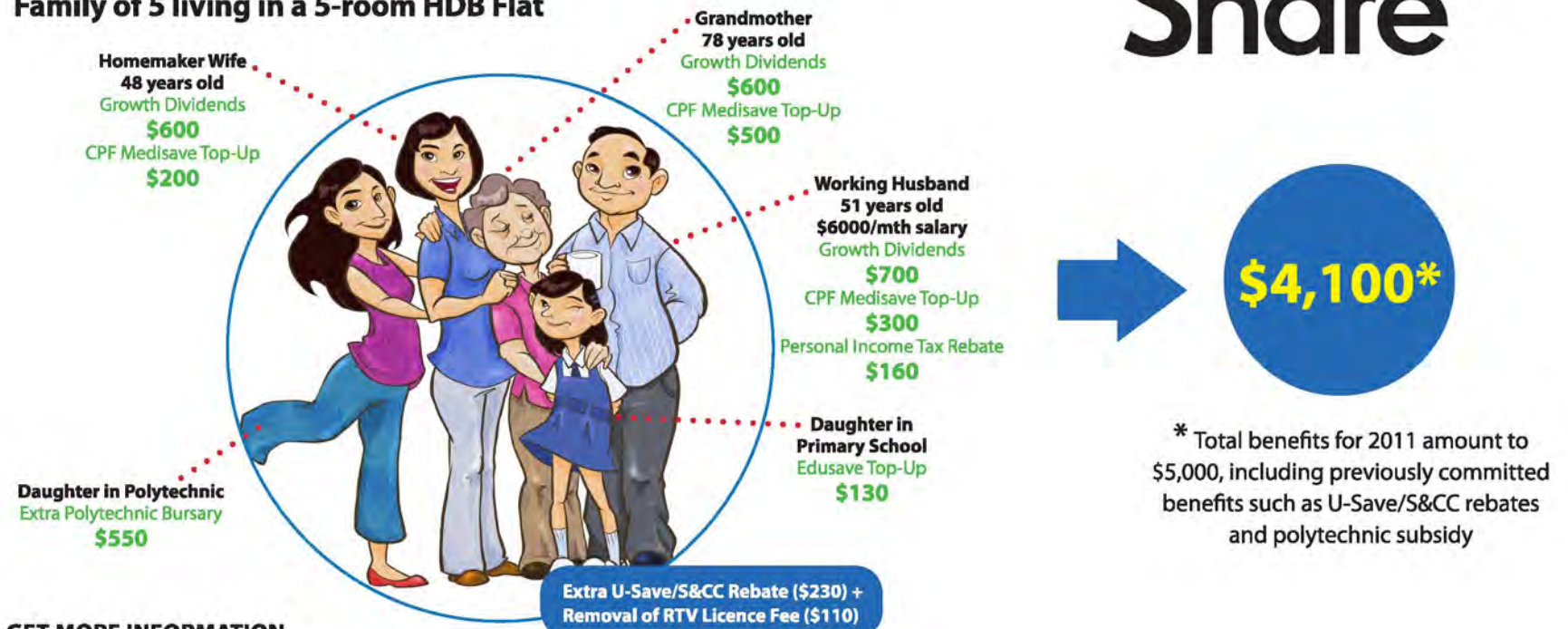
The 'Grow & Share' Package will help Singaporeans cope with the higher costs of living. Lower- and middle-income households will receive substantial benefits — typically worth \$3,000 to \$4,000, much more than the increase in their cost of living this year.

BENEFITS YOU WILL RECEIVE FROM BUDGET 2011

Family of 4 living in a 3-room HDB Flat



Family of 5 living in a 5-room HDB Flat



GET MORE INFORMATION

www.singaporebudget.gov.sg

www.growandshare.gov.sg | Call 1800 2222 888 for more information about the 'Grow & Share' Package

www.pricewatch.gov.sg | Call 6461 1880 for tips on managing your budget or if you notice any excessive price increase

Grow & Share

BENEFITS YOU WILL RECEIVE FROM BUDGET 2011

For the Individual



GROWTH DIVIDENDS

Adult Singaporeans will receive **\$100-\$800** in Growth Dividends in 2011

Most will get **\$600-\$800**

NSF/NSmen get an additional **\$100**



WORKFARE SPECIAL BONUS

50% MORE	25% MORE	25% MORE
2011	2012	2013

Singaporeans earning \$1,700 and below a month will receive both the regular Workfare and a special bonus for the next 3 years.

E.g. 60-year-old earning \$1,200/month will receive \$2,000 in regular Workfare and \$1,000 in the Special Bonus

PERSONAL INCOME TAX REBATE

20% rebate for Year of Assessment 2011, up to \$2000.

CPF

- Employer CPF contribution rate will be raised by 0.5% to reach 16%
- CPF salary ceiling will be raised by \$500 to reach \$5000 per month

PERSONAL INCOME TAX PERMANENT RATE REDUCTION

From Year of Assessment 2012

E.g.

Chargeable Income: \$40,000
Tax payable: \$550
Tax savings: 40% (\$350)

Chargeable Income: \$120,000
Tax payable: \$7,950
Tax savings: 20% (\$1,950)

CPF Medisave

Singaporeans aged 45 and above, who earned \$100,000 or less in Year of Assessment 2010, will receive **\$200-\$700**

E.g.

45-year-old, earning \$60,000 and living in a 5-room HDB flat: **\$200**

70-year-old, retired and living in a 3-room HDB flat: **\$600**

For the Household

Extra Utilities-Save (U-Save) Rebates

HDB households will receive **\$235-\$360** in 2011

E.g.

2-room flat: \$170 (Budget 2011) + \$190 (pre-committed) = \$360

4-room flat: \$210 (Budget 2011) + \$110 (pre-committed) = \$320

This offsets up to 5 months of utilities bills for a family.

Service & Conservancy Charges (S&CC) rebates

HDB households will receive up to 3 months rebate in 2011

E.g.

2-room flat: 1 month (Budget 2011) + 2 months (pre-committed) = 3 months

4-room flat: 1 month (Budget 2011) + 1 month (pre-committed) = 2 months

Special CPF Housing Grant

More help to families earning up to \$2,250/month on top of Additional Housing Grant (AHG)

Families earning up to \$1,500 a month will receive \$20,000.

E.g. A couple earning \$1,200 buying a Build-To-Order flat will receive \$60,000 in grants: SHG of \$20,000, and AHG of \$40,000.

Public Assistance

More help for Public Assistance (PA) recipients:

Single-person household	Up from \$360 to \$400 per month
Family of 4 (2 adults, 2 children)	Up from \$1,210 to \$1,350 per month

LARGER BURSARIES FOR TERTIARY INSTITUTIONS

Students in lower-income households	\$2,900 for university \$1,800 for poly / arts institutions \$1,000 for ITE
Students in middle-income households	\$2,150 for university \$1,350 for poly / arts institutions \$360 for ITE

Radio and Television Licence Fees

~~\$118/yr~~ ~~\$27/yr~~

Edusave

+\$130/each for primary and secondary students

Pre-school Subsidies

Extension of Kindergarten Financial Assistance Scheme (KIFAS) and Centre-based Financial Assistance Scheme for Childcare (CFAC) for families earning up to \$3,500/month.

Financial assistance for needy students

Each school will receive extra **\$10,000 to \$15,000**

Special Education (SPED) Students

Those from lower-income households will benefit from MOE's Financial Assistance Scheme.

Additional grants to SPED schools to help lower- and middle-income students. Each SPED school will receive **\$15,000** on average.

CHILD DEVELOPMENT CREDIT

\$300 or \$400 per child aged six and below

GET MORE INFORMATION

www.singaporebudget.gov.sg

www.growandshare.gov.sg | Call 1800 2222 888 for more information about the 'Grow & Share' Package

www.pricewatch.gov.sg | Call 6461 1880 for tips on managing your budget or if you notice any excessive price increase