

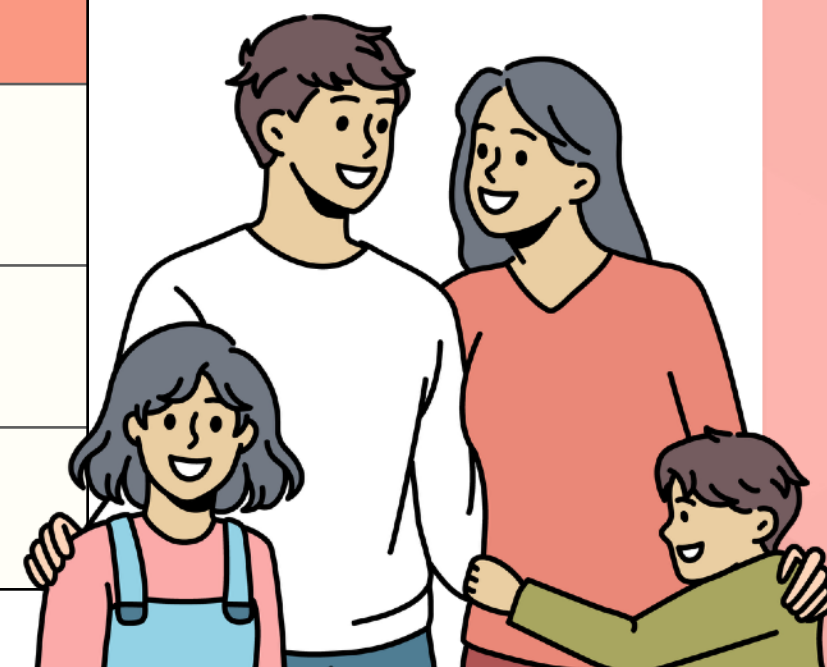
Our progressive system of taxes and benefits



- ▶ Everyone contributes, but those with greater means will contribute more
- ▶ Everyone benefits, but those who are less well-off will benefit more

Our Benefit-to-Tax Ratio

Income group	Benefits for every \$1 of tax paid
Lower-income	About \$4
Middle-income	About \$2
Higher-income	About \$0.30



Benefits Received by Singaporean Households*

- ▶ **Retiree** households will receive about **\$6,900** in net benefits per member
- ▶ **Lower-income** households will receive about **\$5,900** in net benefits per member, equivalent to an additional **90%** of their income
- ▶ **Middle-income** households will receive **more** benefits than taxes paid

** Refers to benefits net of taxes on average per year. For lower- and middle-income households, these refer to employed Singaporean households.*

